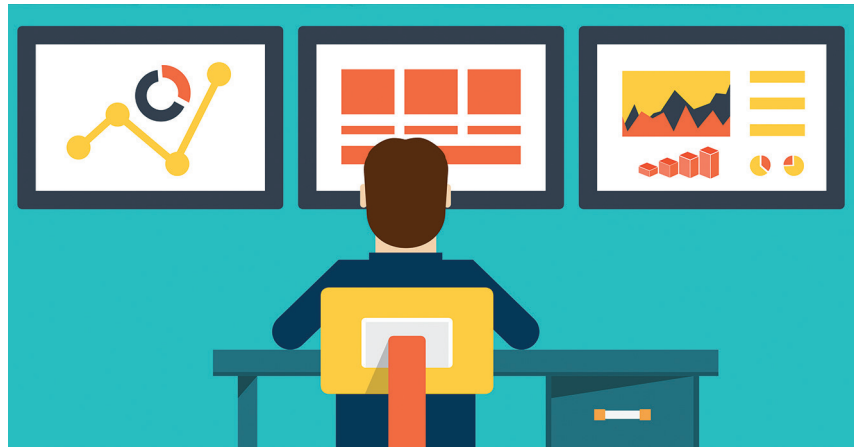




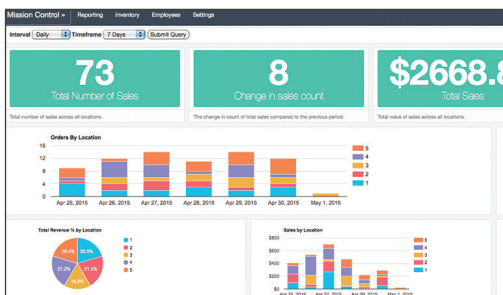
Mission Control

Abreeze Technology

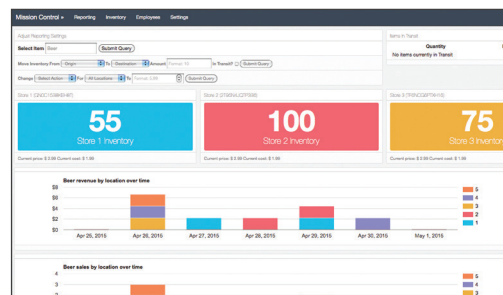


Watch your business take off with Mission Control, the essential reporting and management tool for Clover!

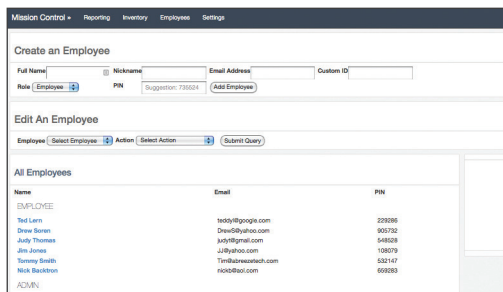
Mission Control is the complete management and reporting system for any business using Clover. The reporting dashboard shows key insights for all of your locations, while the management tools allow you to make changes to inventory and employees across all of your locations at once.



See data from all of your locations at once in the combined dashboard and download organized, aggregate reports



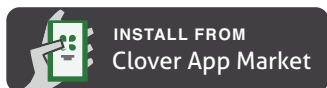
Track and transfer inventory, create or update products across all or select locations from one screen



Create new employees, move employees across locations and message them by role, location or individually

What else do you need to make your mission a success?

Let us know at help@abreezetech.com



Last updated: May 4, 2015

